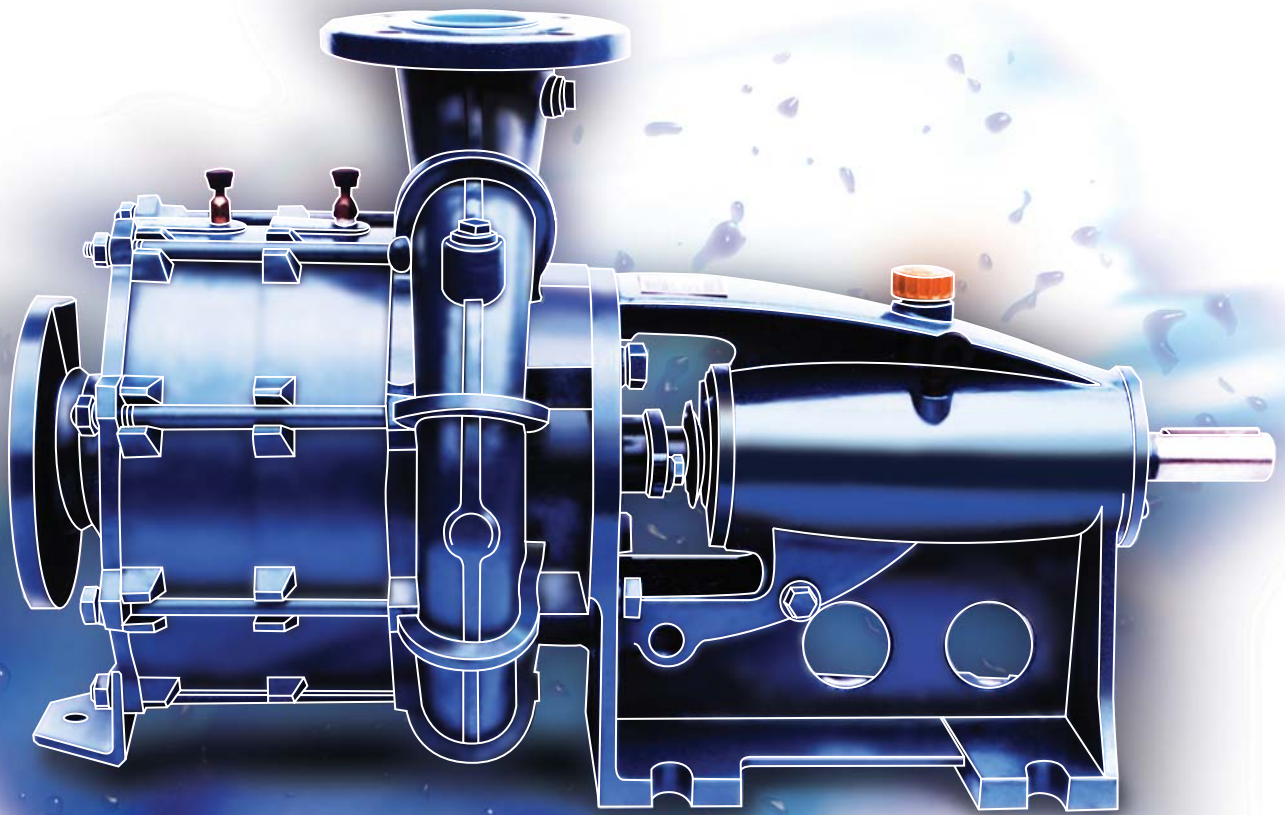


TAKI-PUMP

MEC-MR

MULTI STAGES CENTRIFUGAL PUMP



TAKI[®]



<http://www.takipump.com>

CONSTRUCTION

Horizontal end suction, free shaft end centrifugal pump,
Multi stages, composed of :

- Suction cover;
- Intermediate guide blade diffusers;
- volute pump casing;
- External tie-rods for suction cover and diffusers fastening to pump casing;
- Closed type impellers;
- Bearing stand.

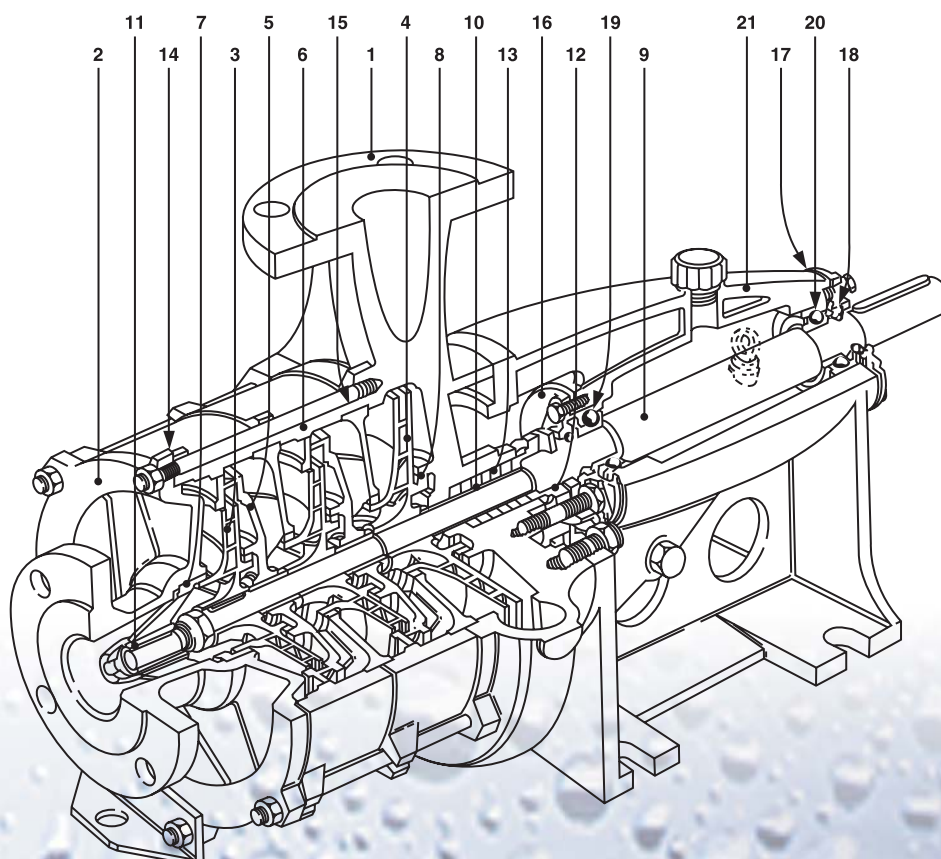
Suction port : axial ;

Discharge port: radial, top-directed with the possibility, on request, to be horizontally positioned by 90° on both sides. Two impeller wear rings, easily replaceable, are lined in the pump casing and in each diffuser. The shaft is loaded by large-size bearings, housed in bearing stand and oil lubricated; shaft of two or more stage pumps, is guided by an additional bushing housed in the suction cover. Adjustable packing-seal, easily replaceable, housed in the stuffing box contained in the pump casing ; through the packing, the shaft is protected by apolished hard-chromium hard-facing or by a chromium-plated sleeve. A heavy-duty bearing stand supports by over arm brace the wet assembly and at the same time, is the setting base; for two or more stages pumps a suctionend foot support is provided

APPLICATION

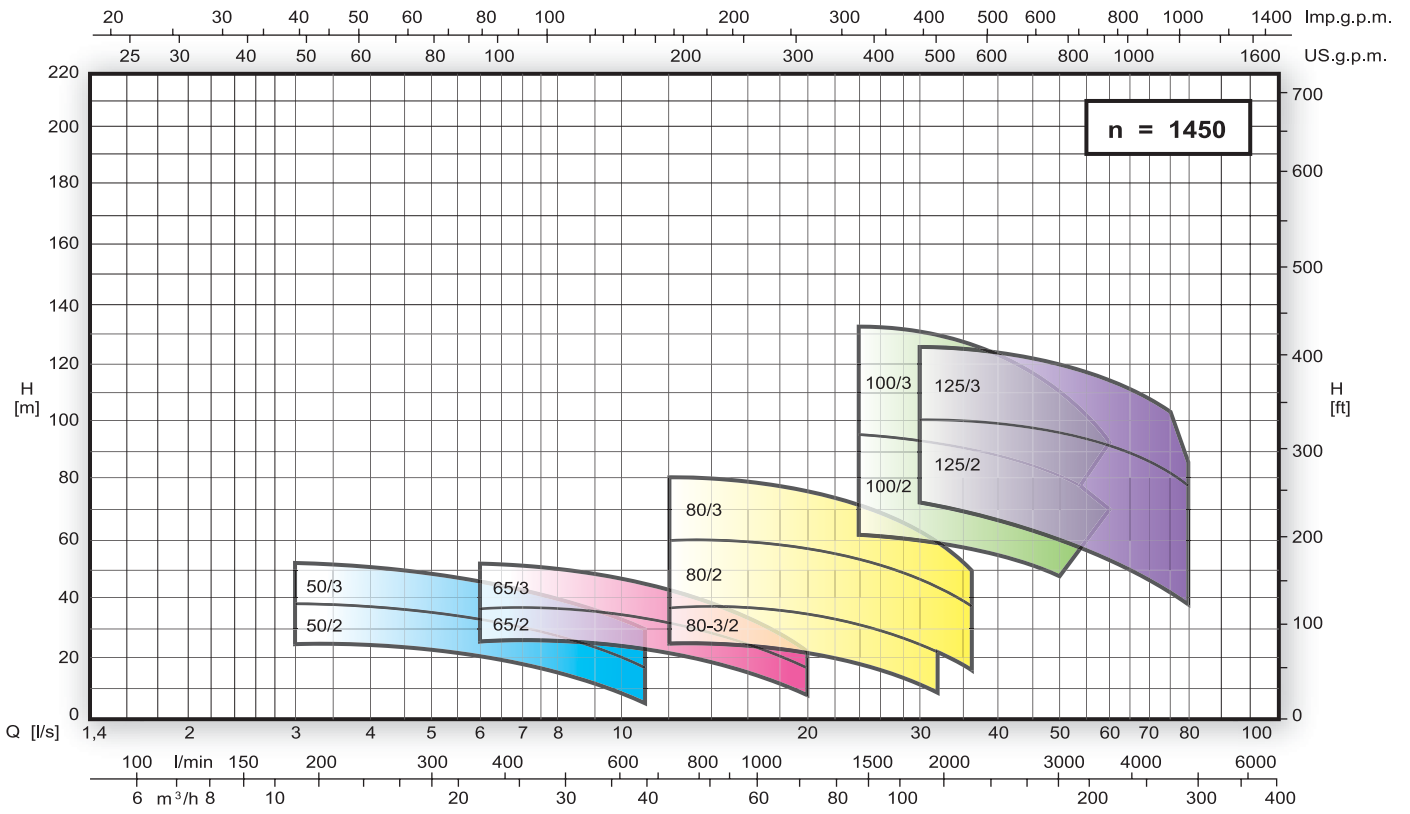
- Water supply for domestic
- Industrial and agricultural uses
- Municipalities
- Fix or mobiles rain-irrigation schemes
- Fire-fighting systems
- Pressure boosting plants

Pump Construction and Materials

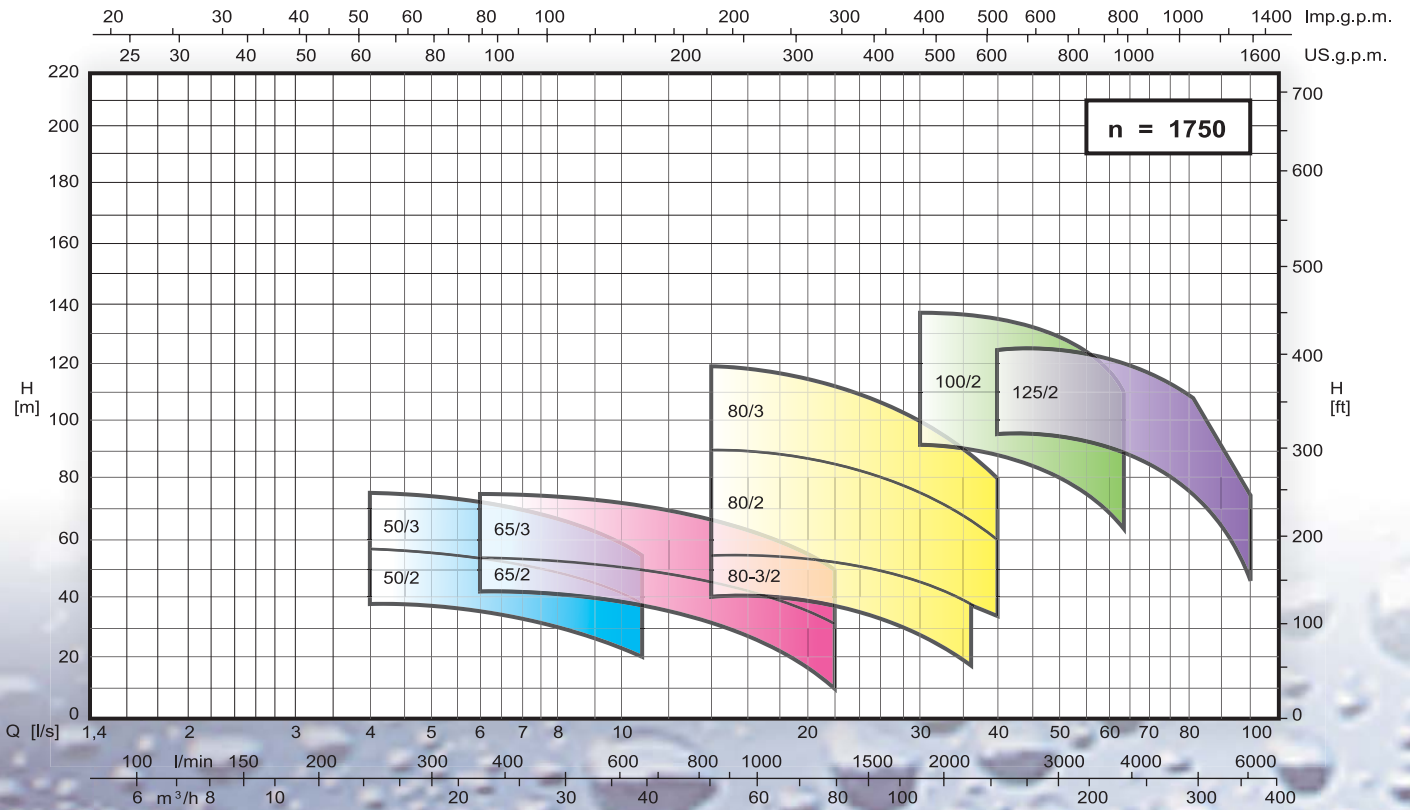


1. **Delivery casing**
cast iron
2. **Suction casing**
cast iron
3. **Impeller**
cast iron (option - bronze)
4. **Impeller**
cast iron (option - bronze)
5. **Diffuser**
cast iron
6. **Stage casing**
cast iron
7. **Wear ring**
cast iron
8. **Wear ring**
cast iron
9. **Pump shaft**
Carbon steel (option - stainless steel)
10. **Shaft bush**
Hard Chrome steel
11. **Bearing bush**
Bronze
12. **Stuffing box**
cast iron
13. **Packing**
Pure graphite
14. **O - ring for suction cover**
Rubber
15. **O - ring for stage casing**
Rubber
16. **Bearing cover**
cast iron
17. **Gasket for bearing cover**
Paper
18. **Seal ring**
Rubber
19. **Bearing**
Steel
20. **Ball bearing**
Steel
21. **Pedestal**
cast iron

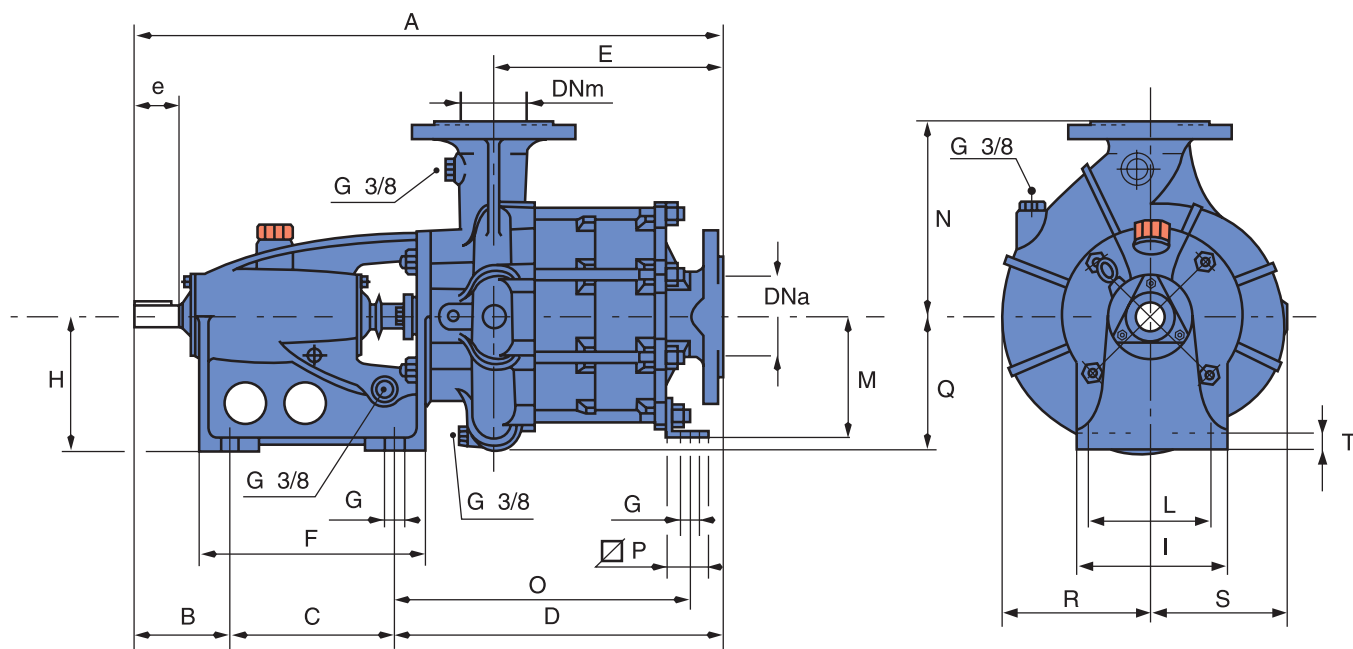
Performance Ranges



Performance Ranges

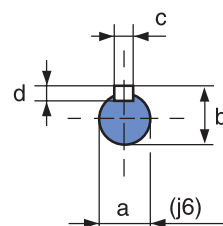
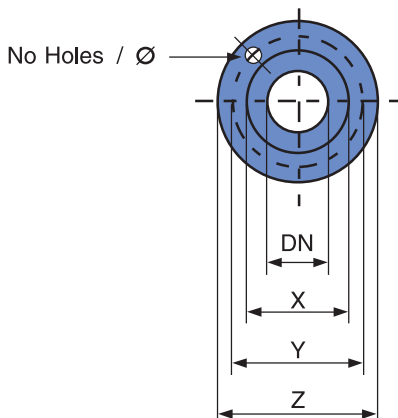


Dimension Table



Flange

DN	X	Y	Z	Ø	No Holes
50	100	120	155	19	4
65	120	140	175	19	4
80	130	150	185	19	8
100	155	175	210	19	8
125	185	210	250	23	8
150	215	240	280	23	8



Type	DNa	DNm	A	B	C	D	E	F	G	H	I	L	M	N	O	P	Q	R	S	T	a	b	c x d	e	Weigh
50/2			611			302	193								264	50									70
50/3			689	124	185	380	271	263	19	160	180	150	167	250	340		174	178	164	19					90
50-2/2	65	50	568			259	150								264					28	31	8 x 7	62	51	
50-2/3			629	125	184	320	213	260	20	160	179	152	150	218	323	65	154	164	150	18					60
50-2/4			691			382	275								385										70
65/2	80	65	715			330	199	322	22	200	213	180	184	273	309	65	170	190	170	19	32	35.2			94
65/3			793			408	277								387										111
80/2			762	152	233	377	250	322							330								10 x 8	80	127
80/3	100	80	859			474	343		22	200		180			425	60	223	240	215	19	38	41			158
80-3/2			758	152	240	366	239	330			215		200	300	-	-	191	204	180						127
100/2	125	100	944			440	295								410										248
100/3			1074	199		570	425						280	400	540	70	275	280	263					103	312
125/2	150	125	947		305	445	295	415	24	280	300	250			390					24	50	54	14 x 9		264
125/3			1077	197		575	425						284	425	543	70	290	303	275					100	328