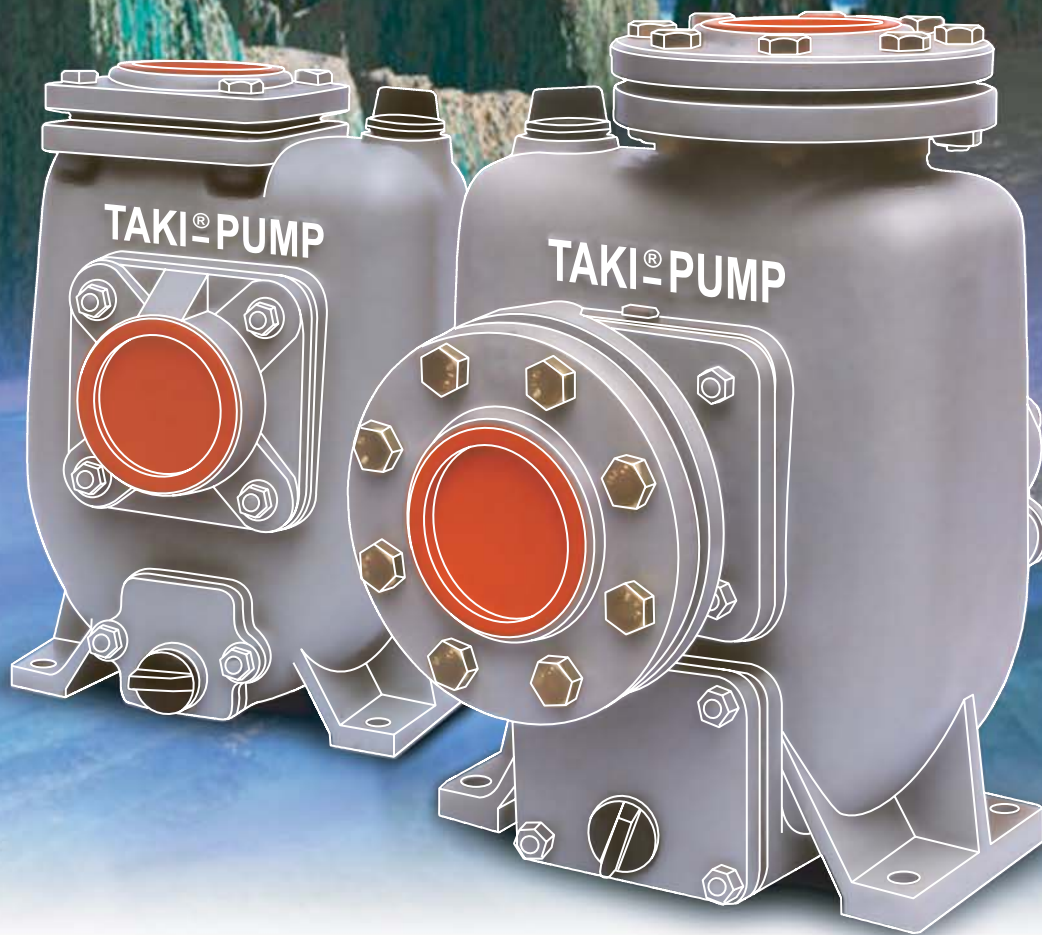


TAKI-PUMP

self-priming centrifugal pump

FSR2 & FS



TAKI[®]



<http://www.takipump.com>

SELF-PRIMING CENTRIFUGAL PUMP

APPLICATION

- IRRIGATION
- WATER SUPPLY
- BUILDING SERVICES
- FISH AND SHELLFISH NURSERIES

FEATURES

• SUPERIOR DESIGN AND CONSTRUCTION

These self-priming centrifugal pumps, designed and manufactured by TAKI PUMP with years of experience, are simple in construction and easy to maintenance.

Fitted with various contrivances. They can all stand long use.

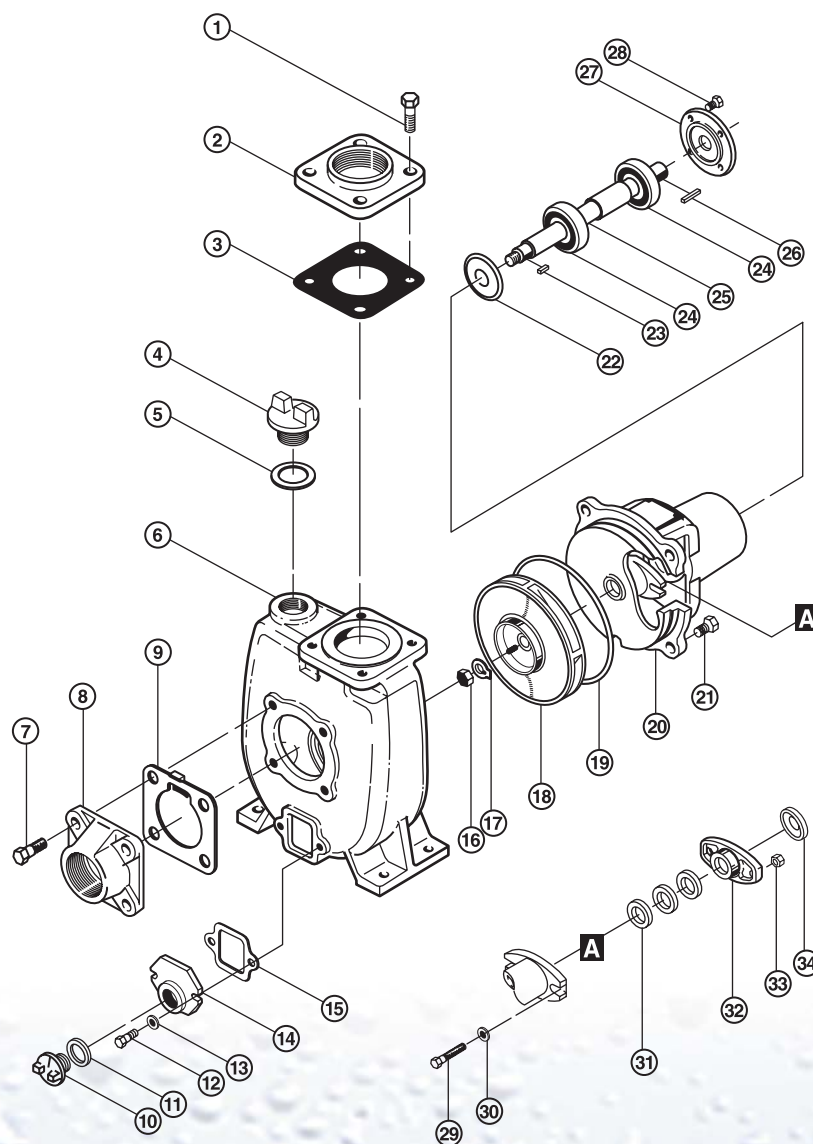
• NO NEED OILING

Oiling is not necessary as sealed ball bearings are adopted.

• HIGH EFFICIENCY

All models operate economically, showing high efficiency at a wide range of applications

CONSTRUCTION AND PARTS LIST



- 1 Discharge flange bolt
- 2 Discharge flange
- 3 Discharge flange packing
- 4 Priming cap
- 5 Priming cap packing
- 6 Casing
- 7 Suction flange bolt
- 8 Suction flange
- 9 Suction check valve
- 10 Drain cap
- 11 Drain cap packing
- 12 Drain cover bolt
- 13 Washer
- 14 Drain cover
- 15 Drain cover packing
- 16 Impeller nut
- 17 Impeller washer
- 18 Impeller
- 19 O-ring
- 20 Bracket
- 21 Bracket bolt
- 22 Bearing cover(inboard)
- 23 Impeller key
- 24 Ball bearing
- 25 Shaft
- 26 Key
- 27 Bearing cover (outboard)
- 28 Bearing cover bolt
- 29 Gland bolt
- 30 Gland bolt washer
- 31 Gland packing
- 32 Gland
- 33 Gland nut
- 34 Deflector

STANDARD SPECIFICATIONS

Liquid	
◦ Kind of liquid	Clean water & waste water
◦ Temperature	0°C(32°F) ~40°C(104°F)

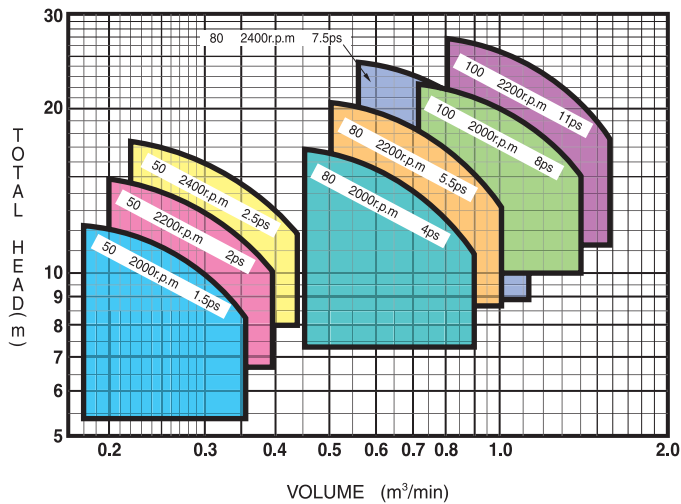
Material			
	Standard	Bronze fitted	Stainless steel
◦ Impeller	Cast iron	Bronze	Stainless steel
◦ Shaft	Carbon steel	Stainless steel	Stainless steel
◦ Casing	Cast iron	Cast iron	Stainless steel

DIRECTION OF ROTATION

Clockwise and counter-clockwise

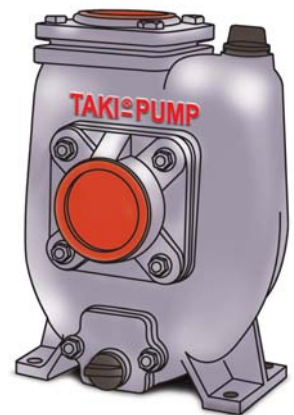
SELECTION CHART

TYPE: FSR2 (ø50~ø100)



COMPARATIVE TABLE

1m	3.281 feet
	1.421 psi
1 ℓ /min (1m³=1000 ℓ)	0.2199 IMP gal/min
	0.2642 U.S gal/min



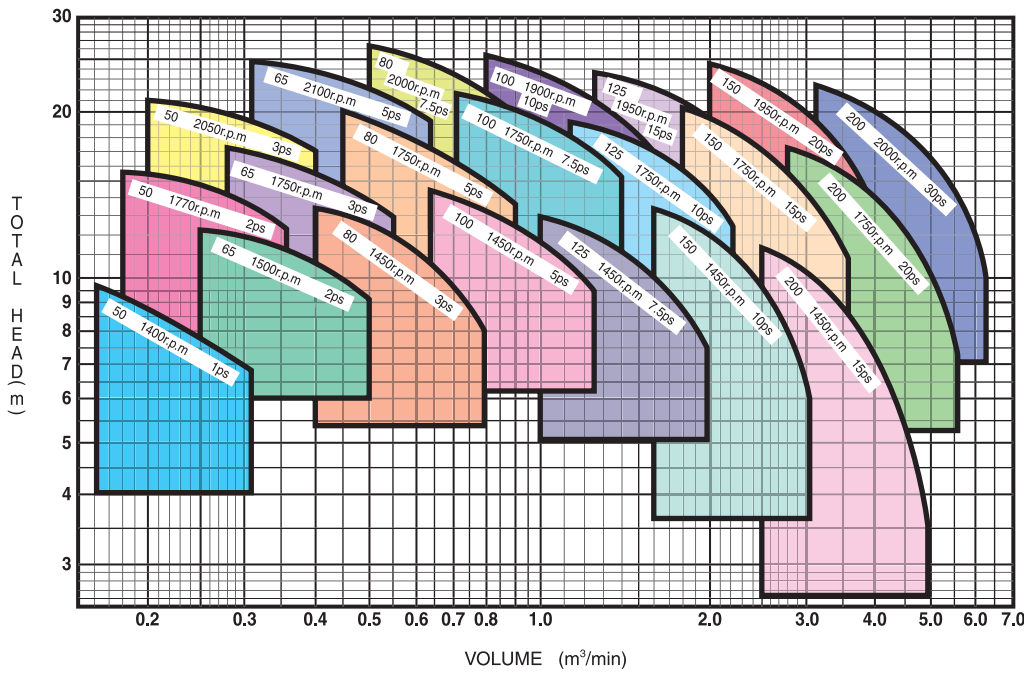
SELECTION TABLE

TYPE: FSR2 (ø50~ø100)

BORE mm	MODEL	BORE inch	rpm	POWER		SPECIFICATIONS					
				PS	KW	Volume	Total head	Volume	Total head	Volume	Total head
						m3/min	m	m3/min	m	m3/min	m
50	FSR2 - 50	2	2000	1.5	-	0.18	12.2	0.25	11.2	0.36	8.2
			2200	2	-	0.2	14.8	0.28	13.5	0.4	10
			2400	2.5	-	0.22	17.5	0.32	15.5	0.44	12
80	FSR2 - 80	3	2000	4	-	0.45	16.8	0.63	15.2	0.9	11
			2200	5.5	-	0.5	20.2	0.71	18.5	1	13
			2400	7.5	-	0.56	24	0.8	21.5	1.12	14.8
100	FSR2 - 100	4	2000	8	-	0.71	22	1	20	1.4	15
			2200	11	-	0.8	26.5	1.12	24	1.6	17

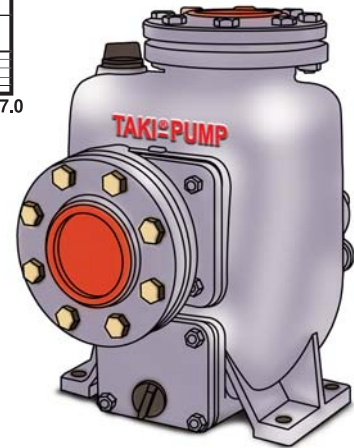
SELECTION CHART

- TYPE: FS (ø50~ø200)



COMPARATIVE TABLE

1m	3.281 feet
	1.421 psi
1 ℓ /min	0.2199 IMP gal/min
(1m³=1000 ℓ)	0.2642 U.S gal/min



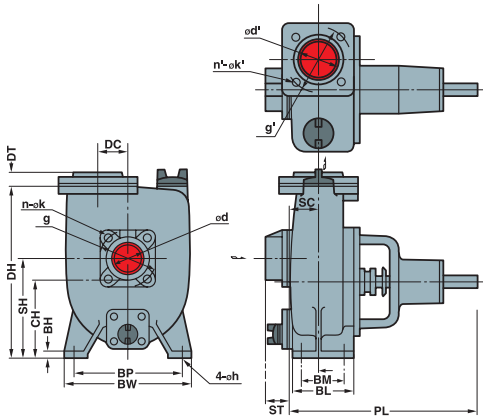
SELECTION TABLE

- TYPE: FS (ø50~ø200)

BORE mm	MODEL	BORE inch	rpm	POWER		SPECIFICATIONS					
				PS	KW	Volume	Total head	Volume	Total head	Volume	Total head
						m³/min	m	m³/min	m	m³/min	m
50	FS - 50	2	1400	1	0.75	0.16	9.5	0.22	8.8	0.32	6.8
			1770	2	1.5	0.18	15.8	0.25	14.8	0.36	12.2
			2050	3	2.2	0.2	21	0.28	19.8	0.4	17
65	FS - 65	2½	1500	2	1.5	0.25	12.2	0.36	11.2	0.5	9.2
			1750	3	2.2	0.28	17.2	0.4	15.5	0.56	12.8
			2100	5	3.7	0.32	24.8	0.45	23	0.63	19.8
80	FS - 80	3	1450	3	2.2	0.4	13.2	0.56	12	0.8	8
			1750	5	3.7	0.45	20	0.63	18.2	0.9	13.8
			2000	7.5	5.5	0.5	26	0.71	23.5	1	18
100	FS - 100	4	1450	5	3.7	0.63	14.2	0.9	12.5	1.25	9.5
			1750	7.5	5.5	0.71	21.5	1	19.5	1.4	15.5
			1900	10	7.5	0.8	25.2	1.12	22.5	1.6	17
125	FS - 125	5	1450	7.5	5.5	1	12.8	1.4	11.2	2	7.5
			1750	10	7.5	1.12	19	1.6	17	2.24	12.5
			1950	15	11	1.25	23.5	1.8	21	2.5	15.5
150	FS - 150	6	1450	10	7.5	1.6	13.2	2.24	11	3.15	5.8
			1750	15	11	1.8	20.2	2.5	17.2	3.55	10.8
			1950	20	15	2	24.2	2.8	21.2	4	12.5
200	FS - 200	8	1450	15	11	2.5	11.2	3.5	8.8	5	3.5
			1750	20	15	2.8	17	4	14	5.6	7.2
			2000	30	22	3.15	22.2	4.5	18.5	6.3	10

DIMENSION TABLE

- TYPE: FSR2

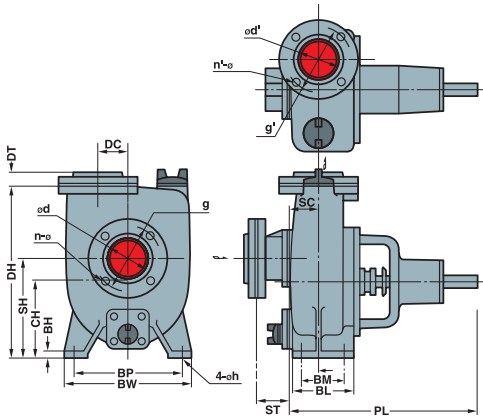


BORE mm	MODEL	PUMP											
		CH	DC	DH	PL	SC	SH	BM	BL	BH	BP	BW	h
50	FSR2 - 50	120	35	285	344	60	160	70	106	14	190	220	12
80	FSR2 - 80	145	40	345	371	80	200	100	130	16	230	253	12
100	FSR2 - 100	170	45	390	488	100	240	140	176	16	254	290	15

BORE mm	MODEL	FLANGE										WEIGHT (kgf)
		d	d'	g	g'	n	n'	k	k'	ST	DT	WTS.
50	FSR2 - 50	50	50	105	105	4	4	3/8"	3/8"	38	27	21
80	FSR2 - 80	80	80	145	145	4	4	3/8"	3/8"	45	33	33
100	FSR2 - 100	100	100	165	165	4	4	5/8"	5/8"	60	39	45

DIMENSION TABLE

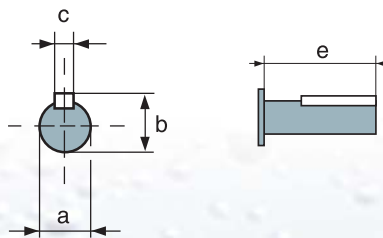
- TYPE: FS



BORE mm	MODEL	PUMP											
		CH	DC	DH	PL	SC	SH	BM	BL	BH	BP	BW	h
50	FS - 50	145	50	337	366	57	195	80	116	18	216	254	12
65	FS - 65	145	50	335	406	70	196	80	116	14	215	253	12
80	FS - 80	162	40	399	423	80	212	110	150	20	254	293	15
100	FS - 100	186	45	467	497	102	254	140	182	22	275	325	15
125	FS - 125	202	45	512	510	105	280	140	192	20	315	360	18
150	FS - 150	227	50	555	622	138	335	160	215	20	318	368	19
200	FS - 200	225	45	595	607	150	375	180	226	20	356	400	19

BORE mm	MODEL	FLANGE									WEIGHT (kgf)
		d	d'	g	g'	n	n'	Ø	ST	DT	WTS.
50	FS - 50	50	50	120	120	4	4	19	85	27	26
65	FS - 65	65	65	140	140	4	4	19	85	31	35
80	FS - 80	80	80	150	150	8	8	19	97	33	47
100	FS - 100	100	100	175	175	8	8	19	102	39	70
125	FS - 125	125	125	210	210	8	8	23	102	43	97
150	FS - 150	150	150	240	240	8	8	23	100	43	112
200	FS - 200	200	200	290	290	12	12	23	125	53	140

mm	MODEL	a	b	c	e
50	FSR2 - 50	19	21.5	6	36
80	FSR2 - 80	24	27	8	42
100	FSR2 - 100	28	31	8	58



mm	MODEL	a	b	c	e
50	FS - 50	19	21.5	6	33
65	FS - 65	24	27	8	42
80	FS - 80	28	31	8	58
100	FS - 100	32	35	10	76
125	FS - 125	32	35	10	76
150	FS - 150	42	45.5	14	100
200	FS - 200	48	51.5	14	56